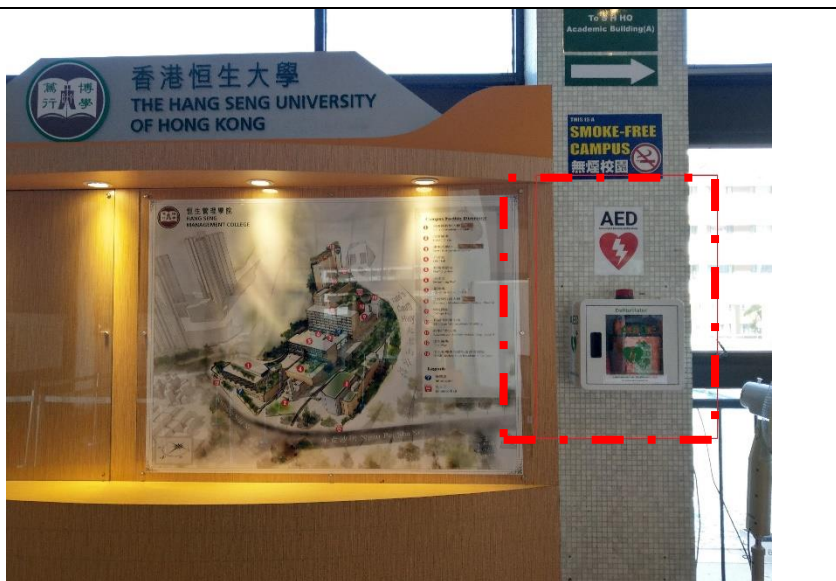


Automated External Defibrillators (AED) are provided in the main campus and the RC in case of a cardiac emergency. AED can be found in the following locations:

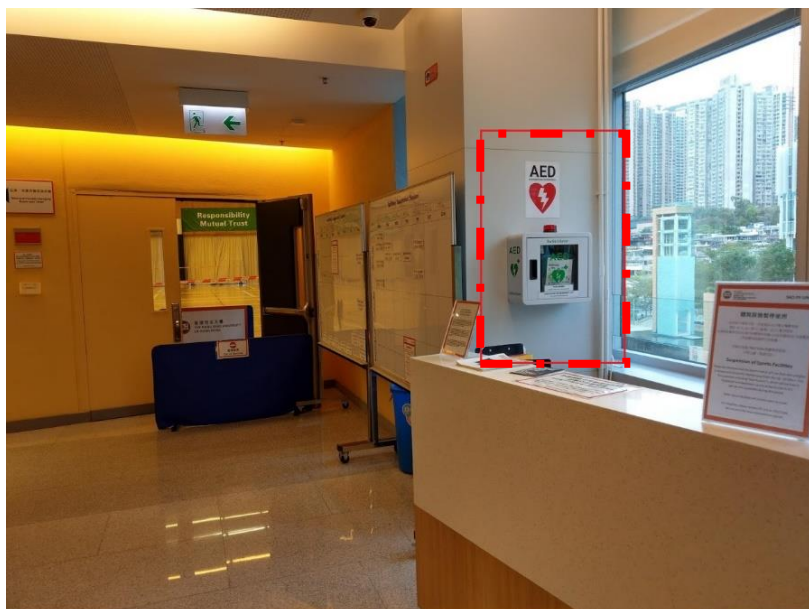
Location of AED in the main campus and the RC



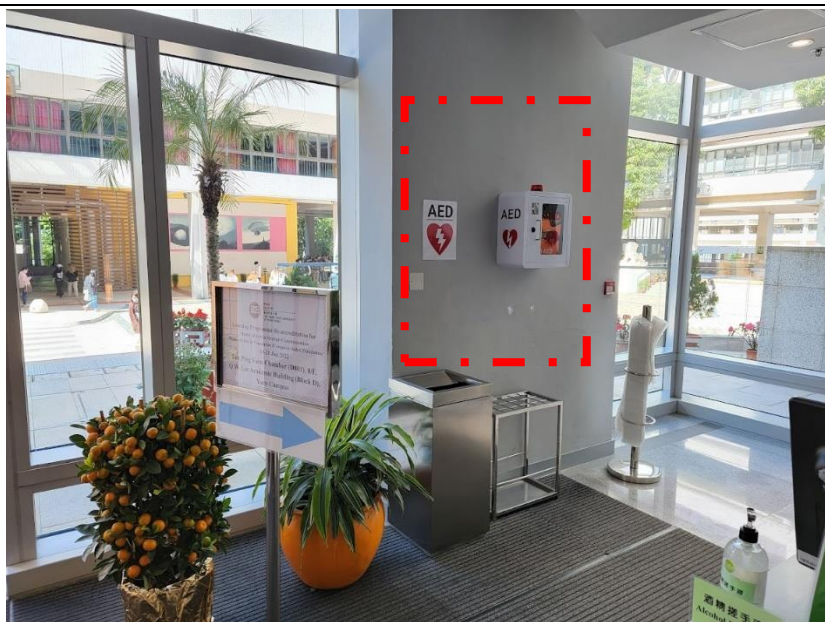
1. M Building:
3/F Security
Counter

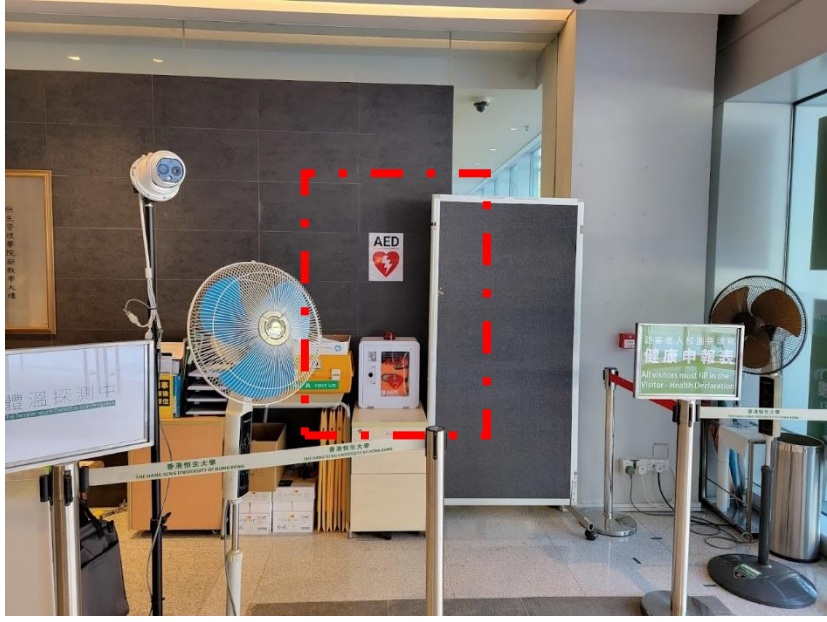
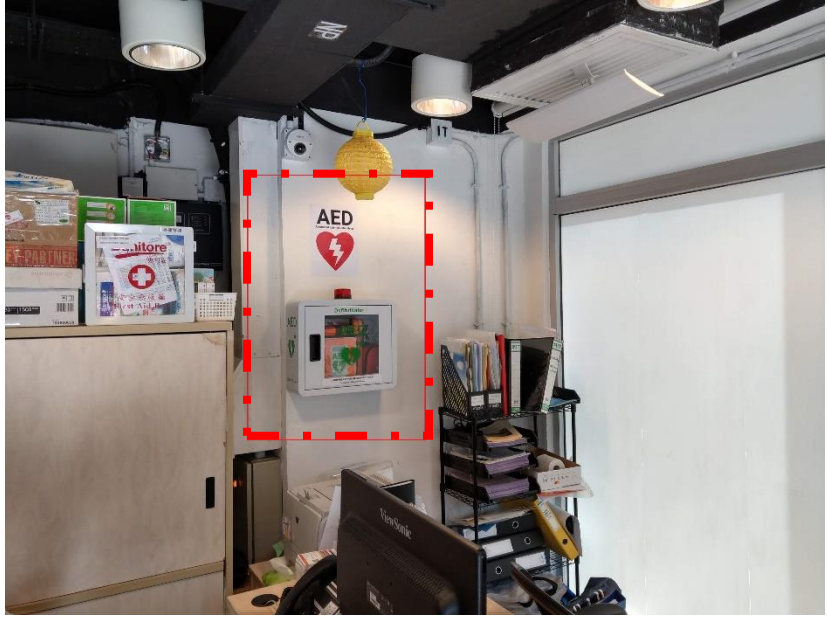


2. Lee Shau
Kee
Complex
(B): 2/F
Service
Counter



3. LEE Quo
Wei
Academic
Building
(D): G/F
Security
Counter



<p>4. S H HO Academic Building (A): G/F Security Counter</p>	
<p>5. Residential Colleges: RCU Office</p>	

- **AED should be operated by trained personnel for the first-aid purpose
- **Opening cabinet door will sound alarm