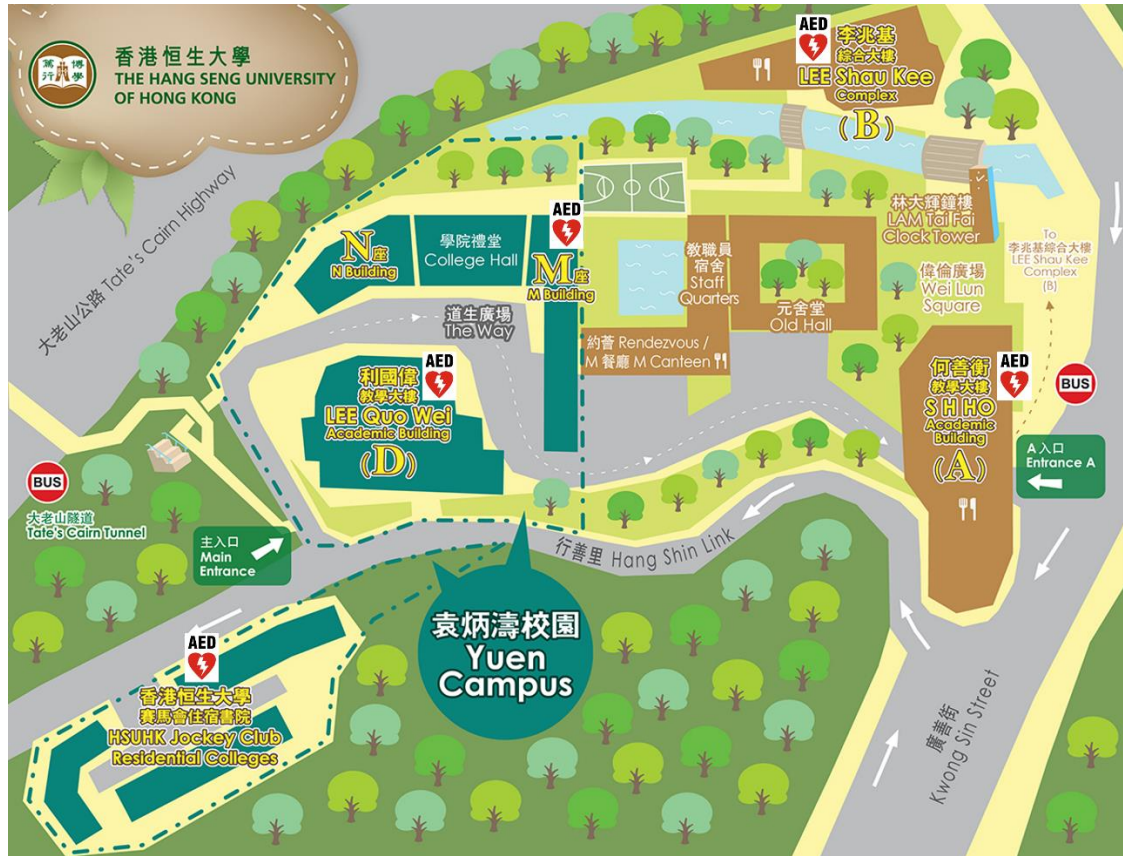
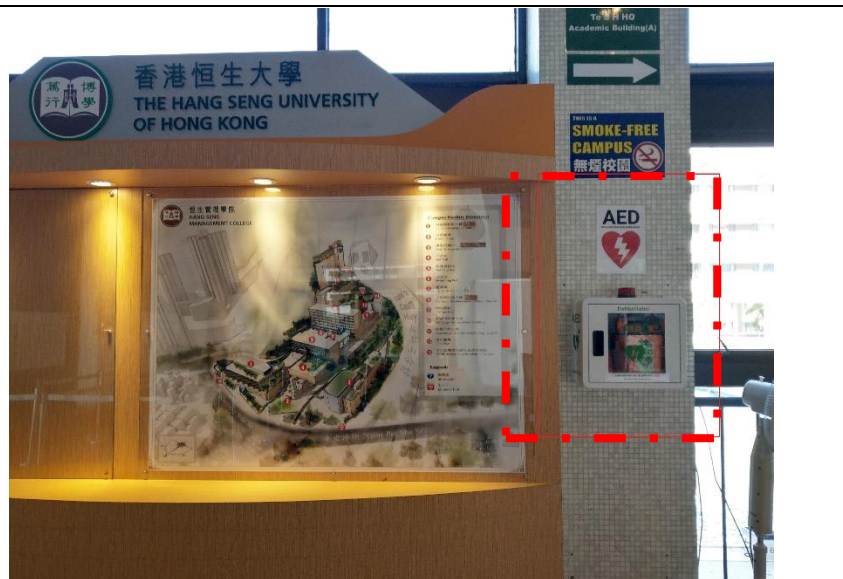


Automated External Defibrillators (AED) are provided in the main campus and the RC in case of a cardiac emergency. AED can be found in the following locations:

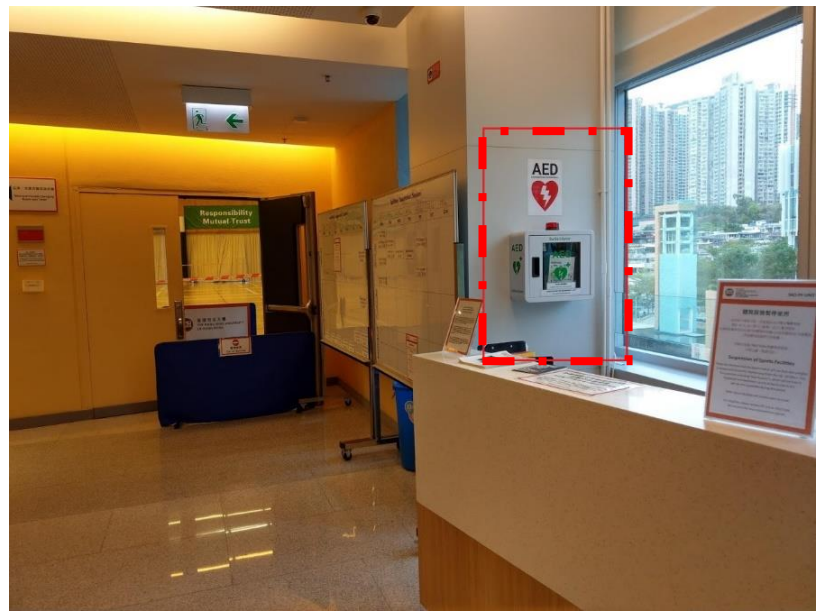
Location of AED in the main campus and the RC



1. M Building:
3/F Security Counter



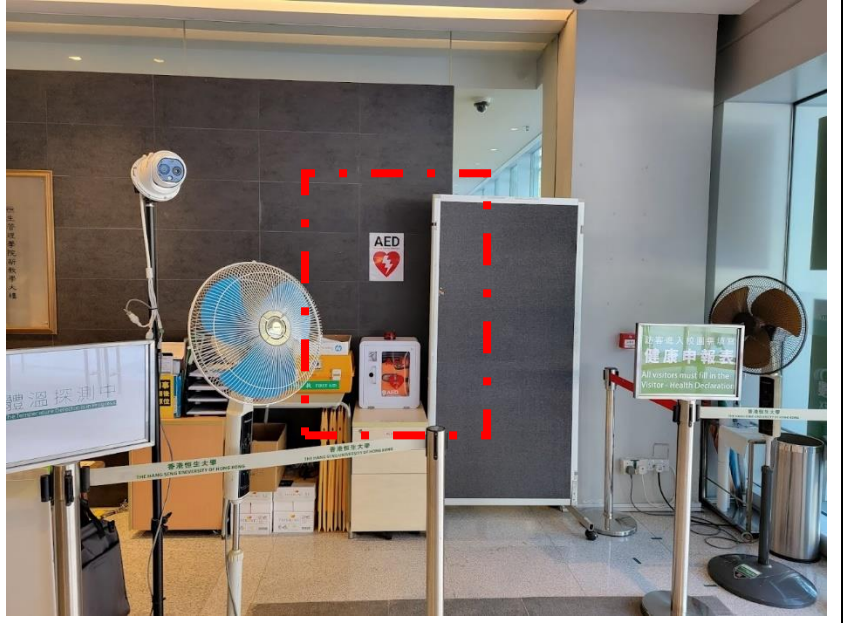
2. Lee Shau Kee Complex (B): 2/F Service Counter



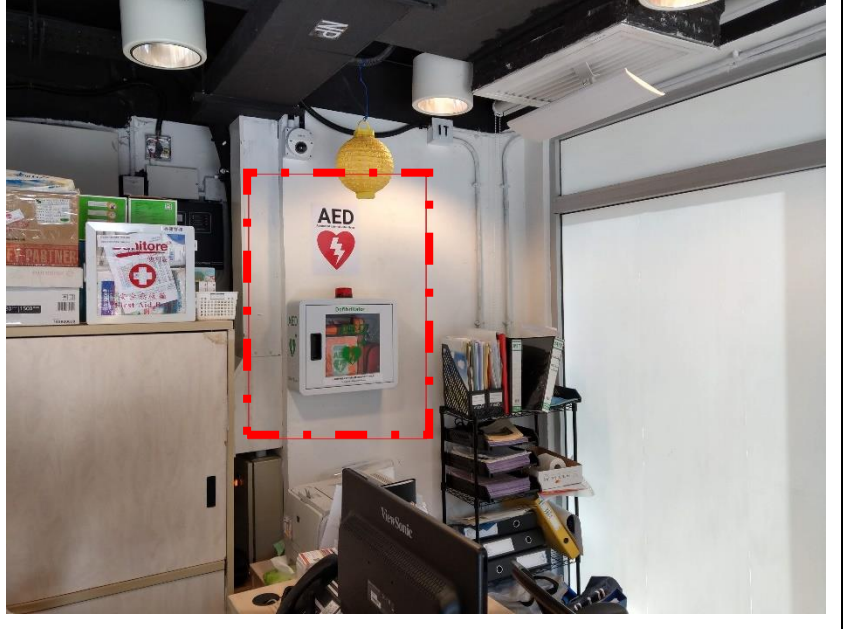
3. LEE Quo Wei Academic Building (D): G/F Security Counter



4. S H HO
Academic
Building
(A): G/F
Security
Counter



5. Residential
Colleges:
RCU Office



- **AED should be operated by trained personnel for the first-aid purpose
- **Opening cabinet door will sound alarm